



Covid-19 in Critically Ill Patients in the Seattle Region — Case Series

Perico et al. NEJM, Mar 30 2020

Patients from nine Seattle-area hospitals who were admitted to the intensive care unit (ICU) with confirmed infection with severe acute respiratory syndrome coronavirus-2 (SARS-CoV-2). The data reported here are those available through March 23, 2020. Each patient had at least 14 days of follow-up.

- Mean Age 64.
- 63% males.
- 50% Temperature >100F.
- 21% had CT scans.
- Lymphopenia (<1500/mm³) -75%.
- Lowest P/F ratio 140 (mean).
- 50% mortality.

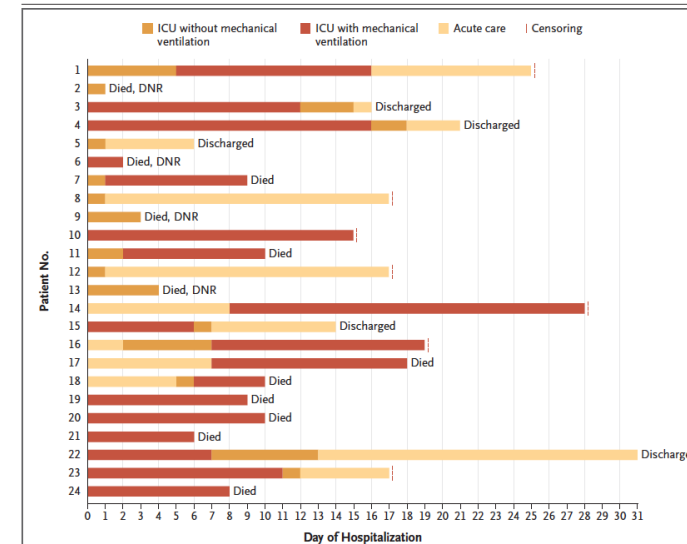
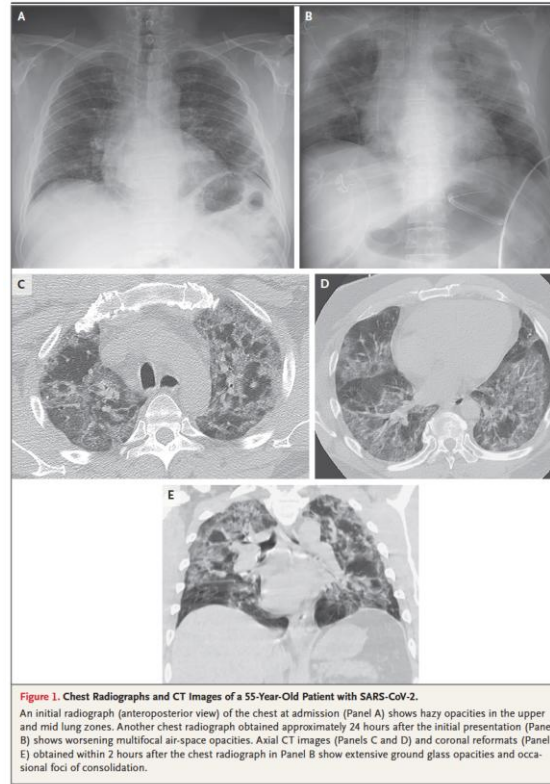


Figure 2. Outcomes for Individual Patients Included in the Case Series.

Do-not-resuscitate (DNR) designates orders that were in place before hospital admission. As of March 23, 2020, a total of 12 patients (50%) had died. Six patients who had received mechanical ventilation had been extubated and three patients remained intubated. Five patients had been discharged from the hospital. All the patients had at least 14 days of follow up. Dashed red lines indicate censoring of data.

